



## Chronic Wound...?

# KFH NOVO

## Next Generation Wound Healing



KFH Novo utilizes the most advanced form of Bio-Electric Stimulation Therapy (BEST). KFH Novo is a small, portable medical device, designed to be used in a clinic or at home. Its unique features lead to distinct benefits:

- **Non-invasive**  
Outside wound area  
Allows standard therapy to continue
- **Cost-effective**  
Very low daily treatment cost (around 5 €/day)  
No upfront capital investment
- **Easy to use**  
Very simple to operate, in the clinic or at home  
Non extra nursing time (patients can treat themselves)
- **State-of-the-art Technology**  
Patented, interactive touch screen front panel  
Unique output parameters to optimize wound healing
- **Very safe therapy**  
No known side effects and no known interactions with wound dressings or medicines.

### All types of chronic wounds

- Venous ulcers
- Pressure sores
- Diabetic ulcers
- Post-surgical wounds
- Other types

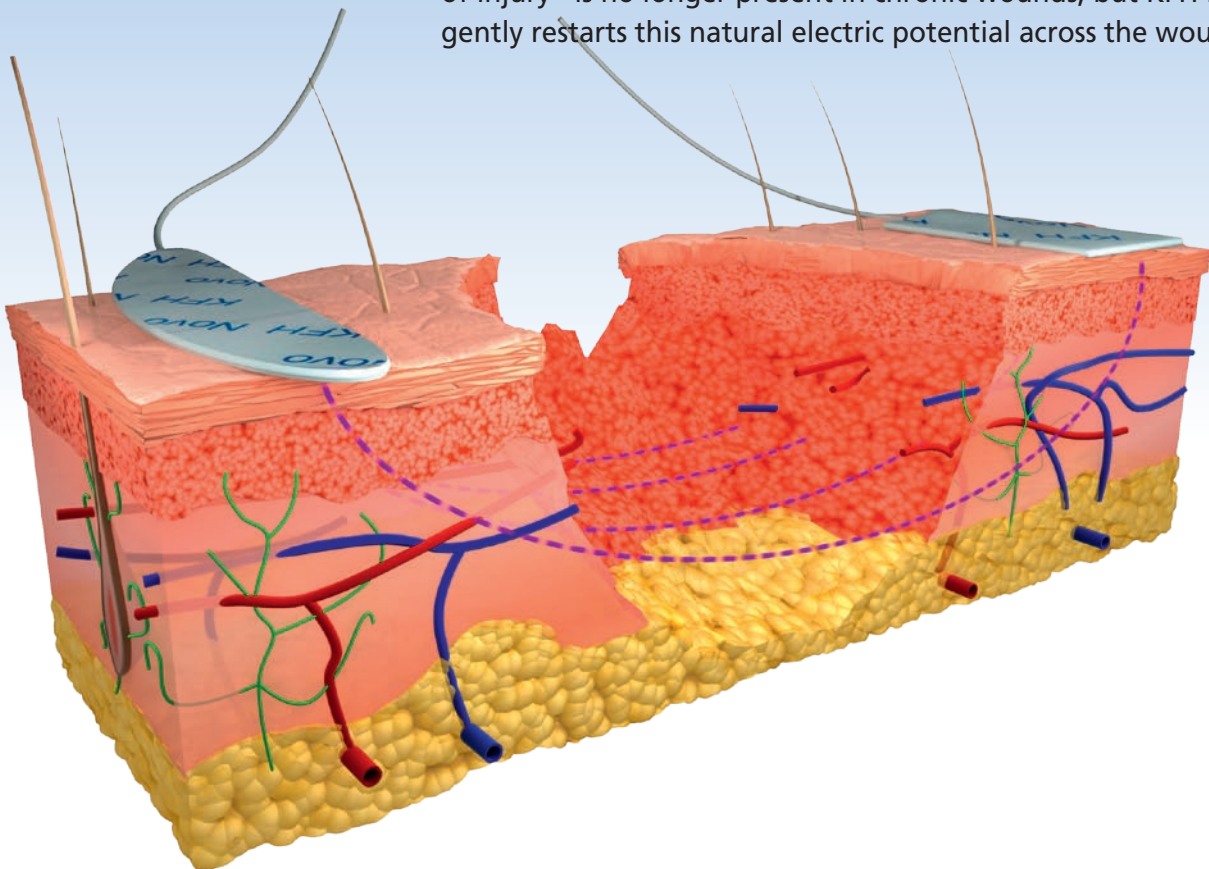


### NOVOpad Monthly Pack

- Everything for : 1 patient, 1 month, in 1 pack
- Hypo-allergenic and skin friendly electrode sets
- Highest quality customized electrodes
- Optimal conduction and adherence

## Mechanisms of Action

Wound healing is facilitated by a physiological low level bio-electric current (a positive charge in the wound and a negative charge on the surrounding skin acts as a skin battery). This so-called “current of injury” is no longer present in chronic wounds, but KFH Novo gently restarts this natural electric potential across the wound.



BEST enhances the physiological processes of wound healing, at cellular level. Documented effects include:

- **galvanotaxis**  
directional migration of cells needed for regeneration (keratinocytes, macrophages, etc)
- **stimulation of fibroblasts**  
cells that orchestrate tissue healing and regeneration
- **an increase in ATP**  
providing energy to restart the healing process
- **stimulation of angiogenesis**  
ensuring transport of oxygen and nutrients
- **increased synthesis of proteins**  
the building blocks of the body

# KFH Clinical Program

## Efficacy

### CASE 1

81 year old female patient

diabetes  
pressure ulcer  
therapy resistant  
open for + 4 months

large pressure ulcer

after 6 weeks, healed completely



### CASE 2

82 year old female patient

venous insufficiency  
chronic leg ulcer  
therapy resistant  
open for + 1,5 years

venous ulcer

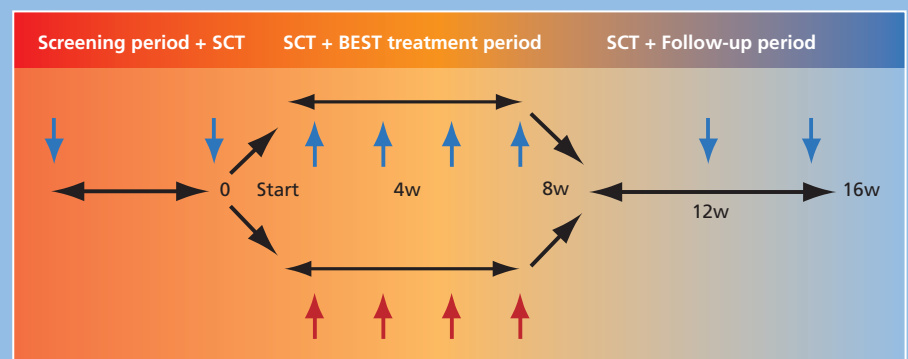
after 6 weeks, healed completely



## ULTRA-BEST study

- Resistant venous ulcers
- 50 patients, 5 top academic centres
- Double blind, placebo controlled
- Final results by Q2 2009

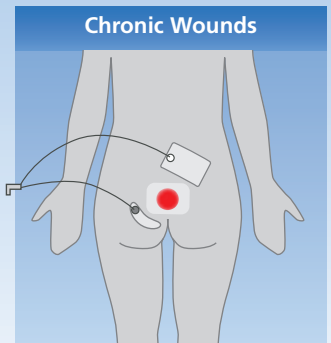
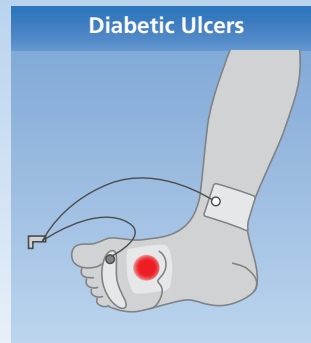
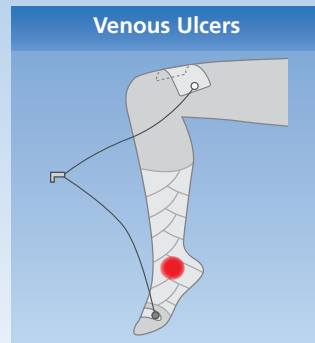
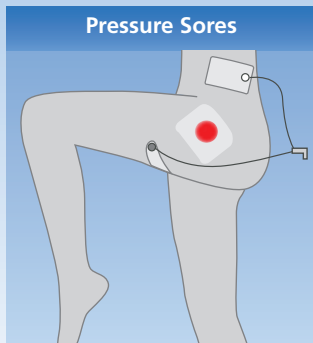
### study design



↓ ↑ evaluation (wound area measurement, pain VAS and QOL questionnaire)

# Practical Information

## ELECTRODE PLACEMENT PER INDICATION



DO's	DON'Ts
For optimal results, recommended treatment times are 2 x 1 hour/day	Do not apply <b>NOVOpad</b> electrodes directly on wounds
Renew <b>NOVOpad</b> electrodes every 4-5 days	Do not interrupt/stop ongoing standard therapy
Use only <b>NOVOpad</b> electrodes with KFH Novo	Do not share <b>NOVOpad</b> electrodes between patients

### Technical aspects

- **Power Source**  
4 AA (LR6) batteries.
- **Timer**  
60 or 30 minutes treatment duration
- **Waveform**  
biphasic, rectangular with decay
- **Current**  
580 (range: 300 to 600)
- **Frequency**  
100 Hz
- **Physical Dimensions**  
190mm x 80mm x 30mm
- **Weight**  
350 grams with batteries



Kingfisher Healthcare nv  
Interleuvenlaan 62 - 3001 Leuven  
t +32 16 39 78 36 - f +32 16 39 78 41

[www.kfhealth.com/novo](http://www.kfhealth.com/novo)

Distributor information:



...We'll make it better.

KFH Novo